

# DOCUMENTARY BIOGRAPHY FILMS VIOLIN LUTHIERS A MEDIA EDUCATION ON THE NIVEL OF ART WORK

Yunanto Tri Laksono<sup>1</sup>

<sup>1</sup>Universitas Dinamika, Surabaya, Indonesia  
Email: [yunanto@dinamika.ac.id](mailto:yunanto@dinamika.ac.id)

## ABSTRACT

DOI: <https://doi.org/10.20111/terob.v14i2.65>

\*Correspondensi: Yunanto Tri Laksono<sup>1</sup>

<sup>1</sup>Email: [yunanto@dinamika.ac.id](mailto:yunanto@dinamika.ac.id)

**Received:**22-04-2024

**Accepted:**05-05-2024

**Published:**06-05-2024



Terob Journal is licensed under a [Creative Commons Attribution-ShareAlike 4.0](https://creativecommons.org/licenses/by-sa/4.0/)

[International License](https://creativecommons.org/licenses/by-sa/4.0/)

**Copyright:** © 2024 by the authors.

*The study aims to analyze the use of signs or symbols in the film to convey deeper messages or meanings as educational media about the value of artwork in the creation of violin instruments in Sidoarjo. The film can be considered as an educational medium because it provides information about the process of making violin instruments in detail. The film can provide knowledge of the materials used, manufacturing techniques, and crafts required in making violin instruments. In addition, the film can also provide an understanding of the value of art in the manufacture of violin instruments. In the film, it may be shown that the creation of violin instruments requires high precision, expertise and dedication. This shows that artwork in the manufacture of violin instruments is not only a technical process, but also involves aspects of art and beauty. This documentary can also provide an understanding of the cultural value and local heritage. In the film, it may be shown that the creation of violin instruments in Sidoarjo has a high cultural value. This enriches our understanding of the diversity of Indonesian culture and increases our*

*appreciation of local crafts. In addition, this documentary can also provide inspiration for audiences interested in art and music. The film can motivate them to develop their interest in the art of making violin instruments or even in the art of the whole. By conducting an in-depth analysis of this documentary, we can understand the art and cultural values of the creation of violin instruments at Sidoarjo and appreciate local crafts. The film can also be an effective educational medium for those interested in art and music.*

**Keywords:** Biographical Documentary Film, Violin Luthier, Artistic Value.

## INTRODUCTION

In Indonesia, the manufacture of the violin as the main musical instrument is not as popular in foreign countries as in Europe. Skill in violin making is a very specific skill and requires intensive training. The manufacture of violins requires high-quality materials and complex production processes, so production costs can also be a factor limiting the number of violin craftsmen in Indonesia.

The production process of this documentary film focuses on the process of making the violin in Sidoarjo district by Safdwi Widiyanto. (finishing). In the process of making the work of the violin Safdwi Widiyanto prioritized the quality of wood to eliminate the good organological acoustics of the results of his work.

The quality of the wood used to make a violin greatly influences the sound and quality of such instruments. Some important factors in the quality of wood for making violins include the type of wood, thickness, density, fiber pattern, and age. Usually, the wood used to make the upper belly of the violin is spruce wood, while for the back and sides it is usually used maple

wood. Sprucewood is usually chosen because it has a good density and good resonance to produce rich and clear sounds.

In addition to the type of wood, the thickness of the wood also affects the sound of the violin. The right thickness will affect the resonance and responsiveness of the instrument to string vibrations. The wooden fiber pattern is also important as it can affect the strength and stability of the instruments. The age of wood can also affect the sound characteristics of instruments, as older wood usually has better density and more mature resonance.

By choosing high-quality wood and paying attention to those factors, the violin maker can create instruments that have a beautiful sound and good quality. (Safitri, 2023) Each series has a different sound character and shape adapting the molding used, the layer of the varnish affects the character of the sound, the aesthetic value obtained from the shape and lacquer used. The tuning phase also requires rigidity to produce a suitable sound.

The other factor is that the quality of the resulting sound must be balanced, thus being able to produce a suitable sound character. Because the

produced work of the violin will later become a part of the big space of music. Music is an important component in the development of one of the disciplines of life. It is a cultural product that evolves over time, making music a discipline parallel to other disciplines (Laksono, 2018).

In eastern Java the luthier violin in particular is quite rare and incomparable with the number of violin players. It was described in news in Java Post on January 20, 2021, page 24.



Picture 1 Violin Luthier  
(Sumber. <https://www.uc.ac.id/library>)

This problem occurs because in the organological framework of the wooden instruments has a fairly high level of complexity, ranging from the construction of the basic structure as well as patterns on the violin head, tape box, tail, baut, violin neck, fingerboard, purfling, curve C, hole F, violine bridge, penetrator, clawed violin, chin holder and also pins and ropes.

The documentary was chosen as a presenter in the violin production process conducted by Safdwi

Widyanto. Every detail in the violin making process is visually presented to provide information to the audience. Film is one of the time media used as a means of entertainment. Documentaries are films that document reality. The primary key to a documentary is to present the facts. Documentaries relate to real people, characters, events, and locations (Telaumbanua & Soufiyarno, 2020).

A documentary is a program that presents a reality based on an objective fact that has an essential and existential value that has the relevance of life, expressing facts and realities without engineering (Rikarno, 2015). The main material of the linear documentary is moving images and so is the interactive documentary. Documentaries are made from images and other media mergers. Interactive documentary filmmakers have used silent images as well as moving images.

Interactive documentaries should always pursue a full-screen approach for interactivity or user engagement. Audio is also a key element of interactive documentaries as it supports flexibility and gives attractive characteristics. The feature of the interactive documentary lies in the moving interface and its navigation

(Zul Anwar dan Hastuti Diah Ikawati, 2021).

## METHODOLOGY

At the stage of documentary film production, a method is a qualitative research method. The researchers will then interview the main source Totok Widiyanto, as well as perform the data collection used, the purpose of using this method to facilitate in communication and data collection accurate and perfect as a perfection in this documentary.

Qualitative research method is a way or method of research that emphasizes analytical or descriptive. In a process of research qualitative things the subject's perspective is more highlighted and the theoretical assumptions are used by the researcher as a guide, so that the research process corresponds to the facts found in the field when conducting research (Fadilla & Wulandari, 2023; Penelitian Kualitatif, 2022).

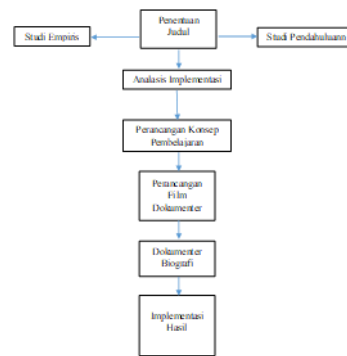


Figure 2. Design Chart

Biography documentary film design using qualitative descriptive research methods. This method can be divided into several stages, one of which is the data collection method used to compile a documentary biography of the violin maker, collected from primary and secondary data sources. The researchers restricted this study to a structural approach in studying the organology of the violin.

The objective of this study is that the researchers want to know how the shape and process of making the violin made by Totok Widiyanto if seen from the Organological Study. It is hoped this research can provide information about the violins made by hand by totok widiyanto structurally. Art itself has a very broad coverage, so this method is used as a descriptive data, so the published results are more focused as a basis in the production of biographical documentaries based on previous sources.

After finding a problem related to the research, a case study is carried out. Of the factors that exist in the research environment, the use of data collection techniques is used to determine the answers so that there is a formula for more specific research. Secondary sources are publicly published sources of data, such as books, newspapers, magazines, and articles. This data collection process uses several methods, namely:

1. The interview was conducted with Totok Widiyanto.
2. The library of this method was carried out by searching for information about the work of making violin instruments that were published through articles or media.
3. Through the Internet can be used to obtain data about the history of the manufacture of violin instruments and various other things that can support the creation of this design.
4. Documentation can be a photo or video activity or location. Previously obtained data analysis methods, analyzed using the 5W1H method:
  - a. What: What is the basis of the manufacture of violin

instruments by Totok Widiyanto? Who is Totok Widiyanto?

- b. Why: Why does Totok Widiyanto dare to take a job as a luthier while not being a life guarantee?
- c. Where: Where does Totok Widiyanto make the instruments of the violin?
- d. When: When did Totok Widiyanto begin the process of making violin instruments?
- e. How: How does Totok Widiyanto market his work?

## RESULTS AND DISCUSSIONS

The aim of documentary research on violin luthier is to provide a deeper understanding of the role and importance of violin in the manufacture and maintenance of violins. It reveals the intricate violin making process and the details carried out by the luthier. This film can show the steps needed in choosing the right wood, carving, coating, and assembling violins with precision.

Highlighting the skills and expertise required by the luthier in building a high quality violin. The film can demonstrate Luthier's in-depth knowledge of acoustics and violin

construction, as well as their ability to understand the preferences and needs of violin players.

Emphasizes the importance of the routine care and repairs carried out by the luthier to the violin. This film can explain why the violins require regular care and how the Luthier can ensure that the viola remains in the best condition to produce a beautiful and harmonious sound.

Describes Luthier's dedication and affection for their work. The film can highlight the spirit and enthusiasm of the luthier in creating high-quality instruments and satisfy the violinist. This movie can help people understand how important luthier is in creating and making beautiful and high-quality instruments such as violins.



Figure 3. Violin Making Basic

Based on Figure 3 the process of making violin instruments. This film gives a detailed overview of the process. Discussions may include techniques, materials used, and expertise required in the manufacture of such instruments. It can be a source

of information and education for audiences interested in the art of making musical instruments.



Figure 4. Field Line

Based on Figure 4 In the manufacture of violins, the determination of field lines is an important step in ensuring the correct shape and proportion of the instrument. Field lines are the lines that cross the top and bottom of the violin, as well as describing the overall shape of the instrument. 1). The scale is the entire length of the instrument, which is usually measured from the base of the neck to the end of the tail of the violin. This scale will affect the size and position of the field line. The common scale used is 4/4 for full size violins. 2). The middle line position: The midline is the line that divides the instrument symmetrically from top to bottom. This line is usually drawn from the basal base to the tip of the clavicle. 3). The upper and lower edge lines: The top and bottom edges are the lines that describe the curvature of the instruments at the top and the bottom.

The top edge line follows the upper edge of the tool, whereas the bottom edge followed the instrument's edge at the bottom part. 4). The back and bottom line: the back line and the lower part are the line which describes the contours of the device at the back and back part. 5). F-diamond and f-box lines: A f-Diamond line is a line that describes the position and shape of the soundpost within an instrument. This line is usually drawn between two sound holes at the top of the instrument. 6). Adjustment and verification: After the field line is drawn, the violin maker will make adjustments and checks to ensure the correct proportion and shape of the instrument. It involves measurements and comparisons between different parts of instruments, such as the distance between the lines, the width of the instrument, and the instrument's height.

At this stage, the experience and expertise of a luthier is crucial to ensuring the correct field line and the good ratio of the instrument.



Figure 5. Wood Selection

Based on Figure 4.3, choosing the right wood material for making violins is an important factor in creating good quality instruments. The following are some commonly used wooden materials in the manufacture of violins:

1. The maple tree (*Acer* spp.): the maple wood is often used for the back, side, and neck of the violin. Maple wood has a fine and dense fiber, as well as provides a good resonance to the instrument. Usually, the used maple wooden originates from the species *Acer pseudoplatanus* or *Acer platanoides*.
2. Spruce tree (*Picea* spp.): The spruce wood is used for the top of the violin or what is also called the "voice board". The spruce wood has a straight fiber and a high density, so it gives a good resonance to the instrument.
3. Willow tree (*Salix* spp.): Willow wood is usually used for the frame or frame of the violin. This wood has a soft and lightweight fiber, thus providing good flexibility and resonance to the instrument. The most commonly used willow type is *Salix alba* or *Salix fragilis*.
4. Ebony tree (*Diospyros* spp.): The

ebony wood is used for fingerboard or fingerboard parts, knots or rope embroidery, and tailpiece or string holding parts. Ebony wooden is very hard, smooth, and durable, so it is suitable for parts that are frequently used and require durability.

In addition to the main wooden material above, violins also use other materials such as resin or rubber to coat the inside of violins, as well as strips that are usually made of steel or pearl. It is important to note that the choice of the right wood material is based not only on the type of wood, but also on the quality and suitability of such wood for a particular instrument. Each wood has unique characteristics that can affect the sound and quality of the instrument.

Therefore, it is important for an experienced luthier to carefully choose and combine the wood material to create a quality violin and have the desired sound characteristics. In the manufacture of the violin, the right choice of wood is an important factor that can influence the sound quality, appearance, and durability of the instruments. An experienced Luthier will have the knowledge and

ability to choose and combin the wood materials carefully, thus producing a qualified violin instrument and having the sound features desired.



Figure 6. Coloring Process

Based on Figure 4.4, the violin coloring process is an important stage in the manufacture of this instrument. Coloring aims to give an aesthetic appearance to the violin and protect the wood from damage. Here are the general steps in the violet coloring process:

1. Surface preparation: Before carrying out the dyeing, the violet surface must be in good condition. This includes ensuring that wood has been smoothed and free from stains, dust, or other dirt. The violet surface should also be free of oil or other substances that may inhibit the absorption of dyes.
2. Basic coloring: Basic colouring is usually done using wood pigments or dyes that are tailored to the desired color. These dyes are uniformly applied to the

violet surface with a brush or soft fabric. Basic painting aims to give a uniform base color to the wood and clarify the beautiful wooden fibers.

3. **Drying:** After basic dyeing, let the violin dry completely. Drying time can vary depending on the type of dye used and environmental conditions. Be sure to follow the drying instructions on the dye product used.
4. **Second coloring (optional):** If desired, a second coloring can be performed to a deeper color or to add a specific effect. The second coloring is done in a manner similar to the basic coloring, i.e. by applying the dye evenly and leaving it to dry completely.
5. **Coating and closure:** After the coloring is completed, the violin can be given a protective coating such as a coating of varnish or shellac. This coating is designed to protect the dye and wood, as well as give a good shine and appearance to the violine.
6. **Details coloring (optional):** If desired, details coloring such as engraving or decoration on the violin can be done after the

coating is completed. This detail coloring is carried out carefully using a small brush or a suitable tool to the desired effect.

It is important to note that the dyeing process on the violin can vary depending on the preferences of the instrument maker and the technique used. An experienced luthier will have the knowledge and skills necessary to the desired coloring results aesthetically and functionally. Thus, the aim of documentary film research on violin luthier is to provide comprehensive and inspiring information about the role of the violin in the world of music and strengthen appreciation for the art of violin making.

The results of a documentary film about luthier violins show how important the role of luthiers is in the manufacture and maintenance of violins. The film reveals the complex and detailed processes in the production of the violins carried out by Luthiers, ranging from choosing the right wood to carving and coating violins carefully. The documentary also highlights the skills and expertise required by a luthier in building high-quality instruments.

The luthiers have an in-depth

knowledge of the acoustics and construction of the violin, as well as the ability to understand the preferences and needs of violin players. Luthier has an important role to play in ensuring the violin stays in the best condition to produce a beautiful and harmonious sound.

The documentary also depicts Luthier's dedication and love for their work. They work with passion and enthusiasm to create high-quality instruments that satisfy violin players. Overall, the results of documentary film research on violin luthiers show how important the role of violin in the world of music is, especially in creating and making beautiful and high quality instruments such as violins.

### **General Overview**

Grezz Residence, Rw. 4, Karangbong, Gedangan District, Sidoarjo District, East Java. It's the place where luthier works and makes the violin. Usually, the luthier atelier is located in a special studio or workshop equipped with the equipment and tools necessary for making the violin, and is a spacious and organized room with work tables, wooden shelves, measuring instruments, and carpenters'

equipment.

Luthier can also have a shop or exhibition room where they show the finished violin made and also sell or repair other musical instruments. Many luthiers or instrument makers have ateliers or special workshops where they make musical instrument. These are usually equipped with the equipment and tools necessary for the violin making process, such as work tables, engravings, smoothing tools, and so on.

Here, they can have access to the facilities and resources needed to make the violin, and can collaborate with students or other music instructors. The atelier also serves as a place to store wood materials and other supplies. It is important to note that the location of the violin making not only affects the process of instrument making, but also the working environment and the mood of the instrument maker. Each luthier may have different preferences and needs in choosing a violin making location, depending on their convenience, accessibility, and business needs.

## Analysis Result

NO	IDENTITAS SUMBER	JUDUL	KETERANGAN
1.	Studi Literatur	Buku berjudul <i>biom</i> Film itu Gampang ditulis oleh Prasetyo	Sebagai sutradara dalam sebuah produksi film mempunyai kerangka dalam memilih produksi dan tugas sutradara sering digabungkan dengan jabatan lain seperti pemilihan lokasi dan waktu membuat sutradara paham dengan alur cerita ataupun skenario yang mau dibuat menjadi mudah.
2.	Artikel Jurnal	Dalam artikel Abdul Rachman, Wahyu Lestari Dengan judul <i>Cathartic Journal of Arts Education</i>	Luthier violin memiliki peran penting dalam memperbaiki dan merawat instrumen yang sudah ada. Mereka dapat melakukan perbaikan kecil seperti mengganti senar yang rusak, mengoleskan slas jembatan, atau memperbaiki keretakan pada bagian kayu. Mereka juga dapat melakukan perawatan rutin seperti membersihkan dan melumasi permukaan agar tetap dalam kondisi yang baik.
3.	Website	Dalam laman website Jawa Post dengan judul: "Jodi Luthier Karena Profesi Langka"	Karena pasti ada pemogokan sutradara. Semua itu harus dicek agar alat musik yang dihasilkan sesuai yang diinginkan." papar pria kelahiran 22 Oktober 1984 itu. Sebelum terjun ke dunia luthier, Totok memiliki profesi utama sebagai musisi. Posisinya pemain solo saat berumur 12 tahun, dia terinspirasi untuk menjadi perajin biola pada 2008. Alasannya, masih jarang orang yang dapat membuat alat musik grade world. Sementara itu, ketidahuannya sangat tinggi demi memajukan seni musik Indonesia. Karena itu, pun mulai lebih sering membelinya dari merek impor.
4.	Wawancara	Wawancara Dengan Totok Widayono	Totok juga menjelaskan langkah-langkah pembuatan biola yang dimulai dengan pemilihan kayu. Menurut dia, tidak sembarang kayu bisa digunakan. "Harus jenis maple, spruce, atau ebony
5.	Referensi Video	Film dokumenter mengenai Susilo Bambang Yudhoyono Meninggal dengan Hati Pilincah dan Tindakan.	Sutradara dalam film ini mempergunakan biografi bapak - beliau membangun Yudhoyono awal awal dengan memberikan biografi secara singkat terlebih dahulu dengan foto ataupun video dengan diarahkan Voice over. Penulis ingin memberikan perbedaan dengan memberikan slide motion untuk memperkenankan biografi musafir

Table 1. Analysis Result

Based on the results of the data analysis carried out, it can be concluded as follows: 1. The director plays an important role in making the film from all aspects.

1. Artistic decision-making: The director is responsible for making artistic decisions that include the selection of perspectives, the style of photographing, the use of music, and editing. These decisions will affect how the story of the luthier violin is delivered to the audience.
2. Story Planning: The director is responsible for planning the documentary film story. They will

define the narrative structure, select key moments, and set the sequence of events to create an interesting and informative stream.

3. Interview director: The director will also be responsible for directing interviews with the violin luthier and other related people. They will determine the relevant questions, direct the conversation, and ensure that the information obtained supports the narrative of the film.

4. Editing: The director works with the editor to scale up the material that has been recorded into the finished documentary. They'll pick the best scenes, set the sequence, and ensure visual and narrative continuity.

5. Creative vision: The directors also bring their own creative vision into the film. They can depict the beauty and uniqueness of the process of making violin instruments, describe the life and struggle of the luthier, or highlight the cultural and historical impact of the violin.

Thus, the director plays an important role in bringing the story of the luthier violin to the broadscreen in a way that is interesting, informative,

and inspiring to the audience.

2. Luthier violin. Based on the above data analysis, that luthier violin plays an important role in the development and evolution of violin instruments. Here are some reasons why luthier violins are important in the development of violins:
  - a. Manufacture of quality instruments: Luthier violins are craftsmen who are expert in making violin instruments with high quality. They have a profound knowledge of the materials used, the manufacturing techniques, and the choice of the right wood to create instruments with beautiful and responsive sounds.
  - b. Innovation and experimentation: Luthier violins often carry out experiments and innovations in instrument making. They tried a variety of new techniques and designs to improve the sound quality, responsiveness, and stability of the instrument. These innovations contributed to the evolution and evolution of the violin as a musical instrument.
  - c. Restoration and maintenance: Luthier violins are also responsible for performing restoration and maintenance of existing violin instruments. They have the knowledge and skills to repair broken or old instruments so that they can return to functioning properly. This allows the historical violin instruments to remain alive and can be played by future generations.
  - d. Individual adjustment: Luthier violins can adjust the instruments according to the preferences and needs of the player. They can make adjustments in size, neck shape, string action level, and other to ensure the instrument fits the player and maximize its musical potential.
  - e. Traditional continuity: Luthier violin also plays a role in preserving and continuing the tradition of making violin instruments. They studied and applied the techniques of making that have existed for centuries, preserving the authenticity and uniqueness of

violin instruments in musical culture.

- f. Thus, the luthier violin played an important role in the development of the violin as a constantly evolving musical instrument and an integral part of the classical and modern music traditions.

## CONCLUSION

The research and publication of the documentary biography of violin luthiers is an interesting and informative topic. This biographical documentary depicts the lives and works of the famous violin makers, known as the luthiers. The research on the film can provide a deep insight into the history and development of violin making, as well as introduce the famous luthiers who have left an irreplaceable legacy in the world of music.

Publications about this film can benefit music lovers, violin fans, and instrument craftsmen. In this publication, information can be provided about the luthiers' personal lives, their journey in developing their skills and knowledge, as well as the impact of their work on the world of music. The research could also dig

information about the unique and innovative technique of violin making used by the luthiers.

In addition, this publication can highlight the important role of luthiers in maintaining the tradition of making authentic and high-quality violins. Can explain how these famous luthiers have influenced the music community and inspired a new generation of violinists. In this research and publication, it can also be discussed about the influence of documentary biography luthiers violin on public appreciation of the art of violin making and classical music as a whole. This documentary can raise awareness and understanding of the importance of preserving cultural heritage and traditional art.

With the research and publication of the documentary biography of the violin luthiers, it is expected to provide valuable information and inspire the audience and readers to appreciate the art of violin making more and to know more about the famous Luthiers.

**REFERENCES**

- Fadilla, A. R., & Wulandari, P. A. (2023). LITERATURE REVIEW ANALISIS DATA KUALITATIF: TAHAP PENGUMPULAN DATA. *Mitita Jurnal Penelitian*, 1(3).
- Laksono, Y. T. (2018). Teknologi Pengembangan Digital. *Jurnal Pengkajian Dan Penciptaan Musik*, 1(1).
- Penelitian Kualitatif, M. (2022). *Metode Penelitian Kualitatif Adalah*. Umsu.
- RIKARNO, R. (2015). FILM DOKUMENTER SEBAGAI SUMBER BELAJAR SISWA. *Ekspresi Seni*, 17(1). <https://doi.org/10.26887/ekse.v17i1.71>
- Safitri, D. (2023). *TINJAUAN ORGANOLOGI INSTRUMEN BIOLA MEREK CTT NUSANTARA KARYA SAF DWI WIDIYANTO*. 3(2).
- Telaumbanua, F., & Soufiyarno, M. (2020). CARA PEMBUATAN FILM DOKUMENTER BOLA - BOLA MIMPI DI RAMZAN STUDIO. *Jurnal Ilmiah Publipreneur*, 6(1). <https://doi.org/10.46961/jip.v6i1.79>
- Zul Anwar dan Hastuti Diah Ikawati. (2021). CRITICAL REVIEW ARTIKEL :“INTERACTIVE DOCUMENTARY ON PERSPECTIVE OF NEW MEDIA.” *TEACHING AND LEARNING JOURNAL OF MANDALIKA (TEACHER)* e- ISSN 2721-9666, 2(1). <https://doi.org/10.36312/teacher.v2i1.349>